



UNIVERSITY OF TARTU



MARA
Mobility and Accessibility
in Rural Areas

Interreg
Baltic Sea Region



UNIVERSITY OF TARTU
Mobility Lab

Tartu
city of good thoughts

Population Mobility Monitor:

Visualising actual mobility flows by using different digital datasets

Janika Raun

janika.raun@ut.ee

[@janika_raun](#)

MARA Final Conference

3.11.2021

Applying Population Mobility Monitor (PMM) in Tartu and its surroundings

The aim is to provide a platform for visualising actual mobility flows based on digital mobility data sources and ... thus aid public authorities in designing their mobility solutions.



Population Mobility Monitor – TARTU

DATA

Four different open source mobility data sets.

Origin-Destination (OD) level data (except Tartu City public transport)

Data on Tartu county level



Mobile
positioning



Public transport

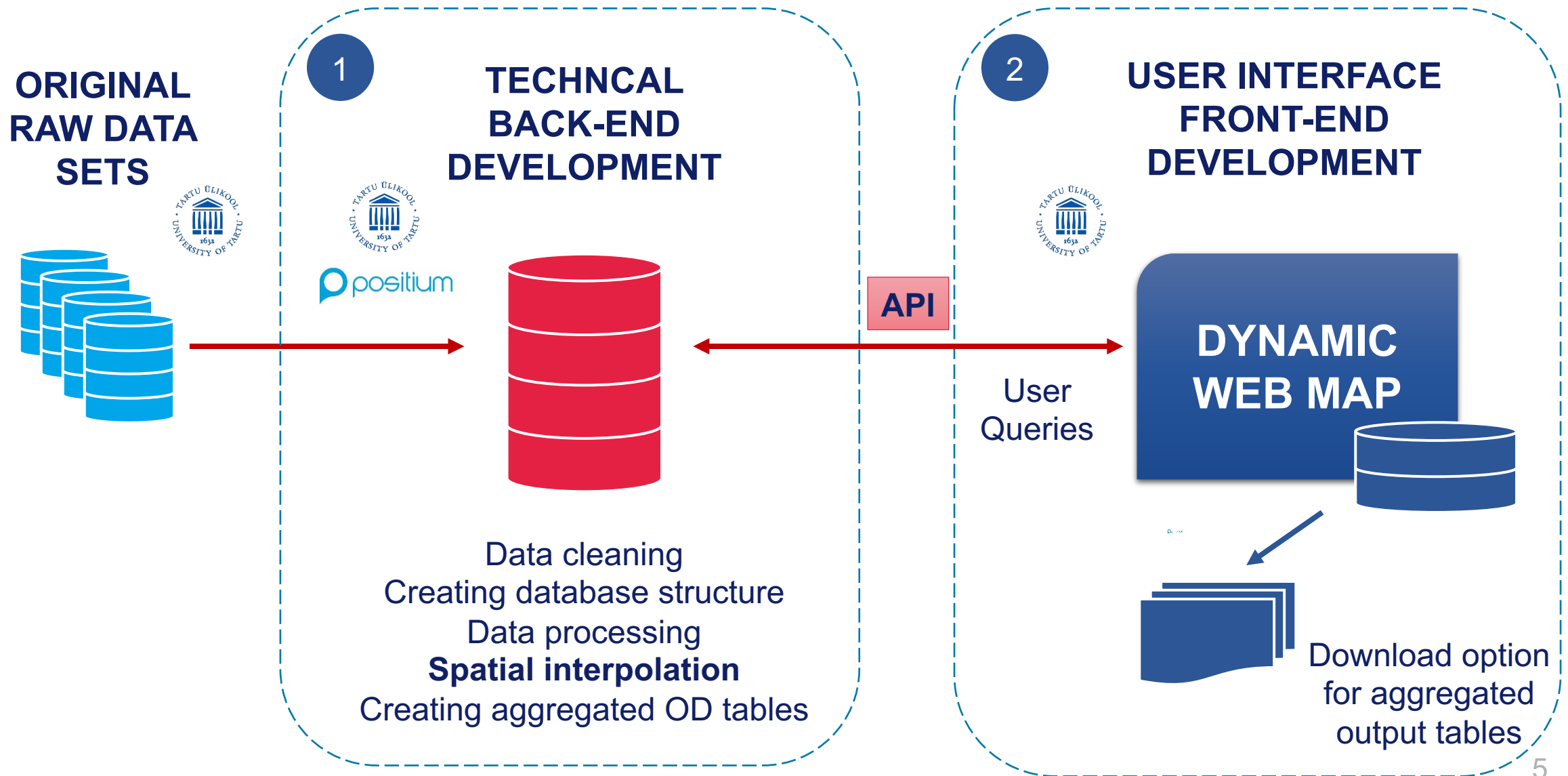


Bike share

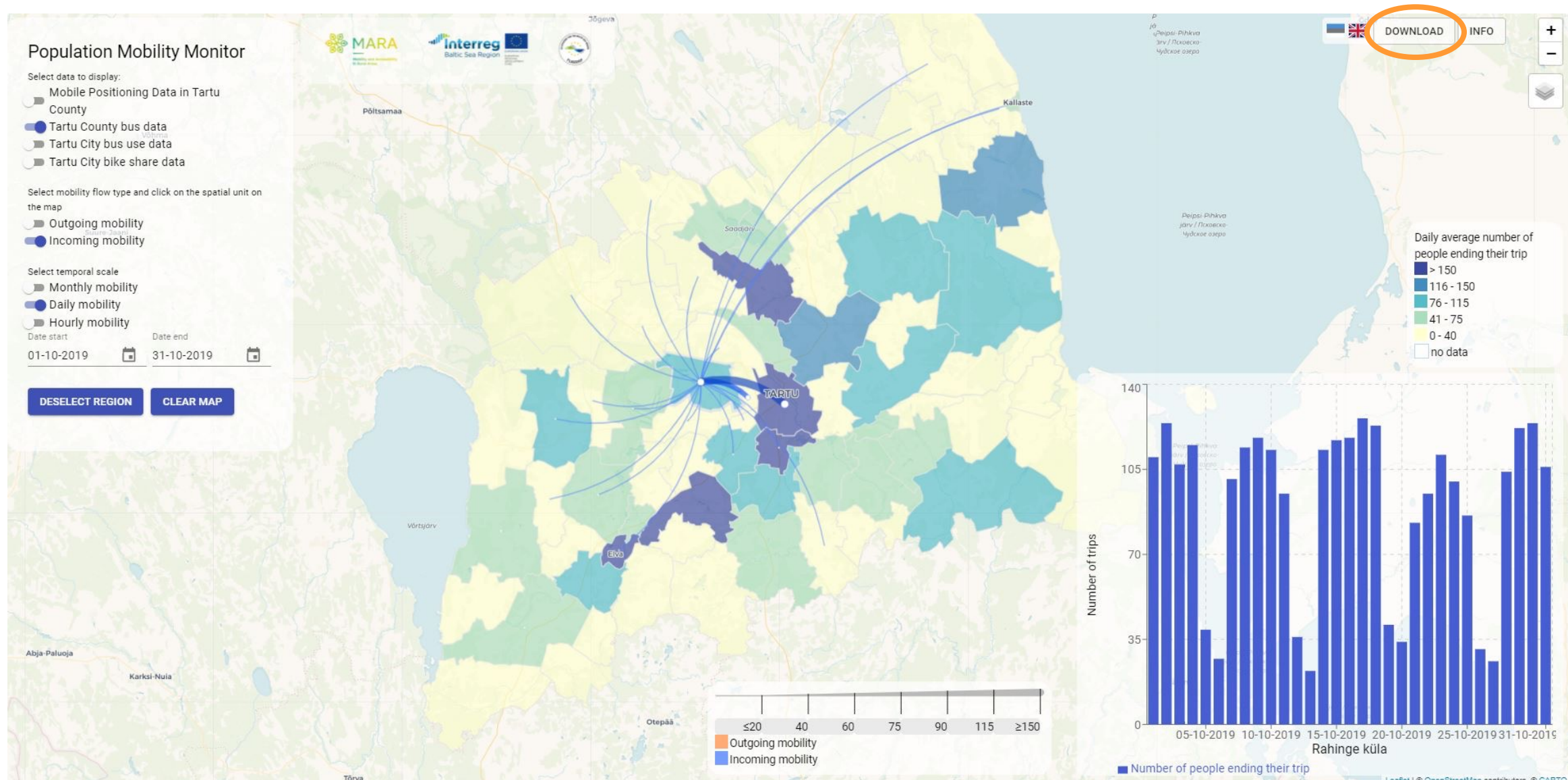


Public transport

PMM basic architecture



Demo: <https://mara.ut.ee>



Which questions to ask, when adopting the tool to your region?

1. What kind of digital mobility data exists in your region?
2. Is the data processed to origin-destination matrix format?
3. What is the appropriate spatial aggregation level of mobility data that you can use in your region?
4. What is the appropriate temporal aggregation level matching your data sets?
5. What kind of additional information is needed?
6. What are the technical possibilities and preferences to adopt the tool in your region?

Application accessible: <https://mara.ut.ee>

Code is available: <https://gitlab.ut.ee/public-pmm>

Q&A: janika.raun@ut.ee



Janika Raun

Project Leader



Kyrylo Medianovskyi

Front-end Developer



Arvi Kiik

System Administrator



Age Poom

Previous Project Leader



UNIVERSITY OF TARTU
Mobility Lab



TRANSPORDIAMET

